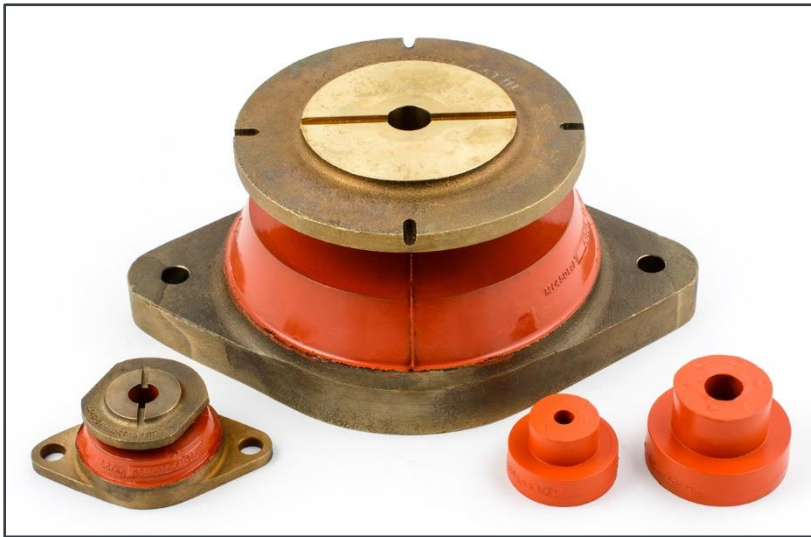




SHIFTEC

# Type 'L' & 'M'



## DESCRIPTION

The Type 'L' and Type 'M' mounts are rubber to metal mounts which consist of two parts. The accelerator unit is main part of the mount and consists of a conical rubber element bonded in between non-magnetic top and bottom plates made from aluminium silicon bronze. The decelerator unit is made from the same materials and is used to create a captive mounting system. The exposed rubber surfaces are protected from the environment with a flexible paint.

## APPLICATION

The Type 'L' and Type 'M' mounts are general purpose anti-vibration and noise isolation mountings. They provide a limited shock isolation capability within the deflection range. The load range of the Type 'L' mount series is from 5 kg to 130 kg over seven mount sizes. The Type 'M' is available in a single size only with a load range of 340 to 450 kg. Each size of mount has different physical dimensions, with the mounts becoming larger as the load range increases.

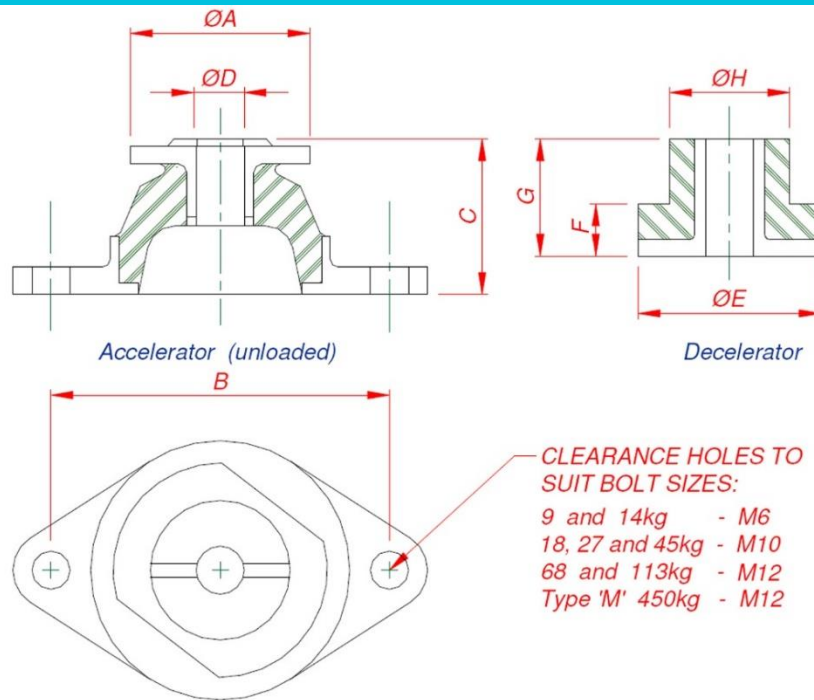
## INSTALLATION

The Type 'L' and Type 'M' mounts are to be installed in the vertical mode only with the central bolt axis perpendicular to the deck. The accelerator unit must always be mounted in the compression mode and the mounts may be installed in two configurations. These configurations are illustrated overleaf. The standard installation utilises a distance piece to correctly position the decelerator unit and a waisted central bolt. Both of these items are manufactured to suit each individual application and are not supplied. The securing bolts, nuts, and washers required for the base fixing are similarly not supplied by Defence Dynamics for the same reason.



SHIFTEC

# Type 'L' & 'M'



Accelerator Unit		Decelerator Unit	
------------------	--	------------------	--

Part Number	NATO Stock Number	Part Number	NATO Stock Number	Mount Type	Nominal Rating	Supported Mass Range kg
15/101	5340-99-541-2542	15/111	5340-99-541-2549	Type 'L'	9	5 – 9
15/102	5340-99-541-2543	15/112	5340-99-541-2550	Type 'L'	14	9 – 18
15/103	5340-99-541-2544	15/113	5340-99-541-2551	Type 'L'	18	18 – 27
15/104	5340-99-541-2545	15/114	5340-99-541-2552	Type 'L'	27	27 – 36
15/105	5340-99-541-2546	15/115	5340-99-541-2553	Type 'L'	45	36 – 57
15/106	5340-99-541-2547	15/116	5340-99-541-2554	Type 'L'	68	57 – 91
15/107	5340-99-541-2548	15/117	5340-99-541-2555	Type 'L'	113	91 – 130
15/108	5340-99-531-8247	15/118	5340-99-531-8248	Type 'M'	450	340 - 450

Nominal Rating	Dimensions, mm								
	A	B	C	D	Central bolt size	E	F	G	H
9	45	70	35	9.5	M8	51	16	32	32
14	49	76	37	11.5	M10	51	16	33	32
18	57	89	40	14.0	M12	57	19	37	38
27	59	92	41	14.0	M12	57	19	38	38
45	70	105	49	14.0	M12	67	19	40	45
68	83	124	57	17.5	M16	67	19	43	45
113	89	130	59	21.5	M20	70	19	44.5	48
450	168	238	114	21.0	M20	83	19	44.5	45

DEFENCE DYNAMICS

shiftec.com

sales.dd@shiftec.com

MEMBER OF

While care has been taken to ensure that the information contained in this publication is accurate, we do not accept responsibility or liability for information which is found to be misleading. Specifications can change without notice.

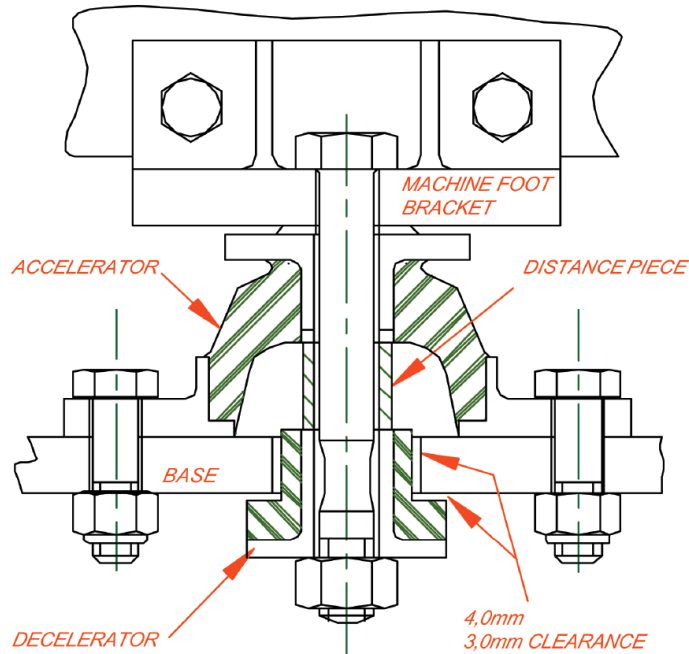




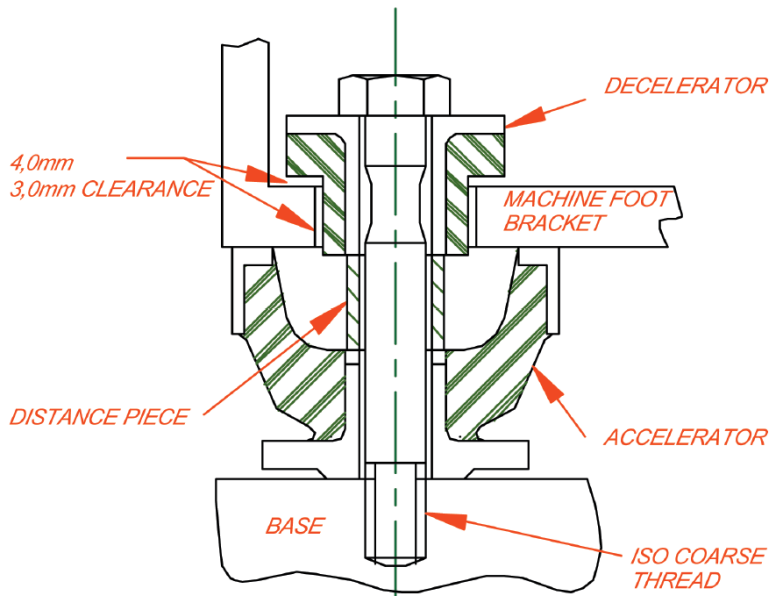
SHIFTEC

# Type 'L' & 'M'

## INSTALLATION MOUNTING ARRANGEMENT #1



## INSTALLATION MOUNTING ARRANGEMENT #2



Note: The distance piece, centre bolt, fixing bolts, nuts, washers are not supplied. The thickness of the base and machine foot/bracket define the length of the central bolt and distance piece. For design assistance, please contact Defence Dynamics if required.

DEFENCE DYNAMICS

[shiftec.com](http://shiftec.com)

Neachells Lane, Willenhall, West Midlands, WV13 3SN, United Kingdom

T: +44 (0) 1902 308 000

E: [sales.dd@shiftec.com](mailto:sales.dd@shiftec.com)

MEMBER OF



While care has been taken to ensure that the information contained in this publication is accurate, we do not accept responsibility or liability for information which is found to be misleading. Specifications can change without notice.