



SHIFTEC

Type 'R'



APPLICATIONS

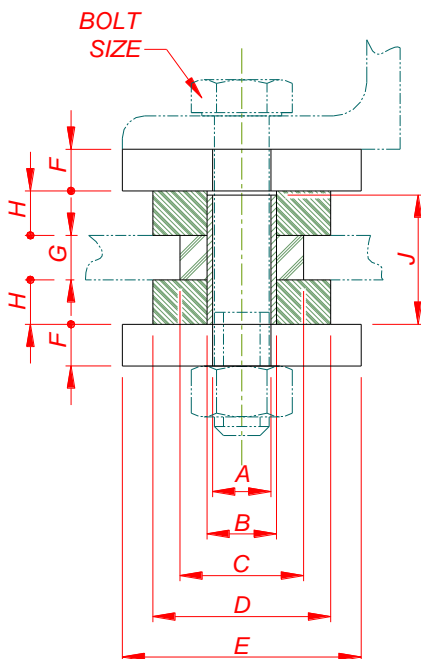
The type 'R' mount is an anti-vibration mount.

The preferred mounting arrangement is with the bolt centre line vertical, as shown below. However, in cases where the centre of gravity overhang would be small, the mount can be oriented in any direction.

When assembled with an appropriate linking cage, the 'R' mount is known as an 'S' mount (sizes 2, 4, 6 only).

DESCRIPTION

The mounting consists of rubber bushes and steel washers and distance sleeve. The rubber is protected with a flexible paint and the steel elements are protected with a zinc plated finish.



Part Number	NATO Stock Number(s)	Mount Size No.	Supported Nominal Load
	5340-99-xx-xxxx		kg
15/401	961-2289 734-9847 347-0389	1	5
15/402	306-2879 730-6589 958-2927	2	10
15/403	051-7346 450-7839	3	18
15/404	374-7173 300-0897	4	27
15/405	660-7573 327-7499	5	36
15/406	783-2099	6	45

Part Number	Mount Size No.	Supported Nominal Load	Dimensions, mm									
			A	B	C	D	E	F	G	H	J	Bolt Size
		kg										
15/401	1	5	13	17	24	32	42	10	16	10	34.5	M12
15/402	2	10	13	17	27	37	50	10	16	14	42.5	M12
15/403	3	18	17	21	30	40	52	13	16	14	42.5	M16
15/404	4	27	17	21	35	50	68	13	16	16	46.5	M16
15/405	5	36	21	25	44.5	60	80	15	16	16	46.5	M20
15/406	6	45	21	25	44.5	64	86	15	16	16	46.5	M20

DEFENCE DYNAMICS

shiftec.com

Neachells Lane, Willenhall, West Midlands, WV13 3SN, United Kingdom

T: +44 (0) 1902 308 000

E: sales.dd@shiftec.com

MEMBER OF



While care has been taken to ensure that the information contained in this publication is accurate, we do not accept responsibility or liability for information which is found to be misleading. Specifications can change without notice.