



BRIEF INFORMATION

Heavy Tone Horn DL50 V2

- Ideal for commercial vehicles
- Optimized Gen-2 Horn in quality and reliability
- Bolt-free: Riveted assembly in production increases quality and consistency
- Marathon Test: Continuous sound beeping test for 30 minutes*
- Deep and penetrating warning signal sound

PRODUCT FEATURES

Application

Horns are a mandatory part of the safety equipment of a vehicle. A particularly perceptible sound is necessary in order to be able to warn other road users optimally in dangerous situations. Our signal horns offer you a high level of functional reliability.

Design and function

- The driver presses the „horn“ on the steering wheel.
- The signal is sent via a relay, thus activating the electromagnet.
- The diaphragm of the horn is now attracted by the magnet, separating the Minus Pole from the battery so that the magnet loses its power – consequently, the diaphragm returns back to its rest position. However, this will reconnect the Minus pole, so this process will be repeated as long as the horn is pressed.
- When the horn is pressed, the vibrations are very fast and so produce the loud sound.

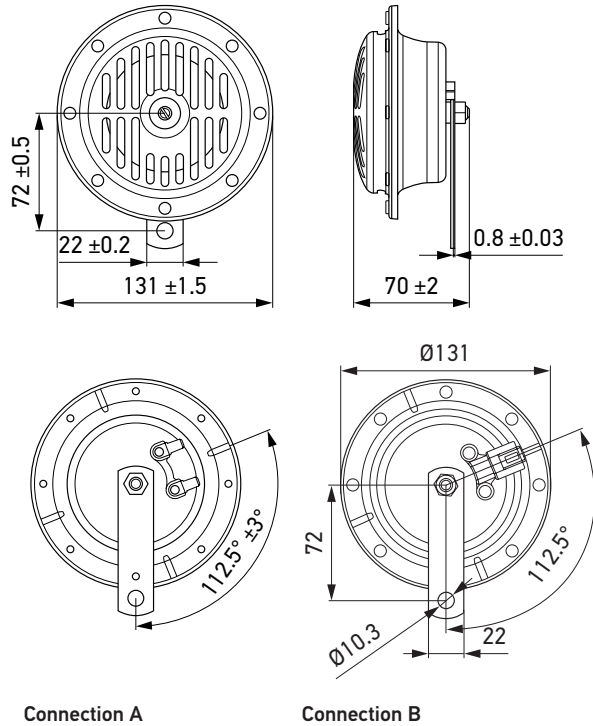
* Sample testing data in the laboratory.

TECHNICAL DETAILS

Technical Data

Diameter	130 mm
Nominal voltage	12 V / 24 V
Frequency range	310 Hz (low tone) 380 Hz (high tone)
Sound pressure level @ 2 m	114 dB (A) ± 4 dB (A)
Power consumption	84 W (24 V) 72 W (12 V)
Current consumption	max. 3.5 A (24 V) max. 6 A (12 V)
Operating temperature	-40°C to +85°C
Protection class	IP 54
Service life	100,000 cycles (ECE-R28)
Housing material	Metal
Type approval	ECE-R28

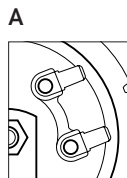
Technical Drawing



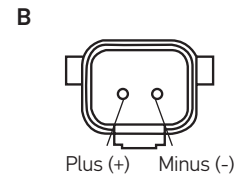
Connection A

Connection B

Connector



6.3 mm blade terminal contacts



Splashwater-proof „DEUTSCH“ connector DT 06-25

PROGRAM OVERVIEW

Product photo	Description	Connector	Part number	Packaging unit
	12 V, 310 Hz, low tone	A	3CA 004 811-001	1
	12 V, 380 Hz, high tone		3CA 004 811-011	1
	24 V, 310 Hz, low tone		3CA 004 811-021	1
	24 V, 380 Hz, high tone		3CA 004 811-031	1