



SHIFTEC

# Type 'Y' and 'YNS'



## DESCRIPTION

The 'Y' mount is a modified version of the Type 'X' mount, developed by the Ministry of Defence to provide improved noise attenuation at higher frequencies.

The essential improvement in noise attenuation is provided by precisely compounded rubber mouldings, forming the 'accelerator' and 'decelerator' units. These units act as a high frequency isolator providing increased noise isolation performance over the 'X' mount.

There are eight sizes of 'Y' mount giving a load range of between 9 and 500 kg. These sizes are divided into three sub-groups based on their dimensions, with groups one and two being 51 mm (2") wide and group three being 102 mm (4") wide: 10 and 20; 45 70 110; 180 320 450.

The 'YNS' (Y Non-standard) mounts are variation of the 'Y' mount which are mounted in tension instead of compression. The 'YNS' are often used in combination with the Type 'Y' where equipment requires mounting in two planes. These mounts are also known as 'Non Standard Leaf Spring' or NSLS mounts.

## APPLICATION

The Type 'Y' mount produces similar shock protection as the Type 'X' mount and has the advantage of superior noise and vibration isolation. The Type 'Y' mount gives better combined shock and vibration isolation than any other resilient mount approved for use by the MoD for Naval applications.

## INSTALLATION

The Type 'Y' mount must always be installed in its vertical compression mode, while the 'NSLS' mounts are always installed in vertical tension.

The 'Y' and 'YNS' mount uses a simple single bolt fixing method on each side of the mount which facilitates the installation of the equipment on board ship.

A fixing kit is required to install a 'Y' mount, which are available in two types (1 and 2). The choice of fixing kit is defined by the method of bolting at the top of the mount. The two installations are illustrated overleaf. The Type 'Y' mount can be ordered without a fixing kit with the fixing kit ordered separately; or the mount can be ordered complete with a fixing kit. The 'YNS' mounts are supplied with a specially designed fixing kit as standard.

DEFENCE DYNAMICS

[shiftec.com](http://shiftec.com)

[sales.dd@shiftec.com](mailto:sales.dd@shiftec.com)

MEMBER OF

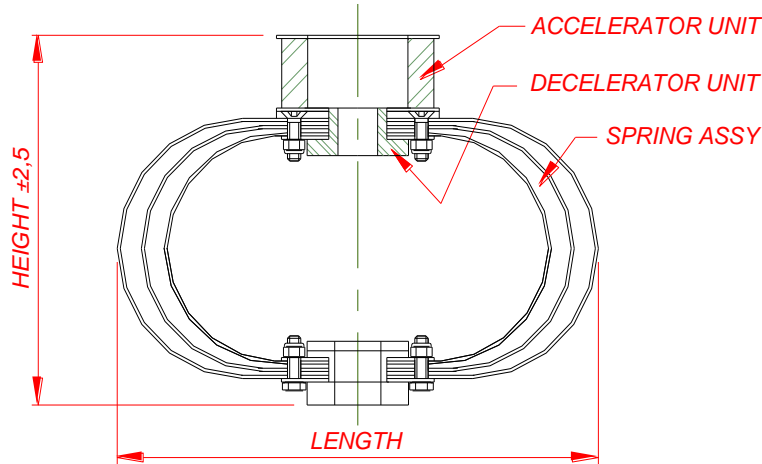
While care has been taken to ensure that the information contained in this publication is accurate, we do not accept responsibility or liability for information which is found to be misleading. Specifications can change without notice.





SHIFTEC

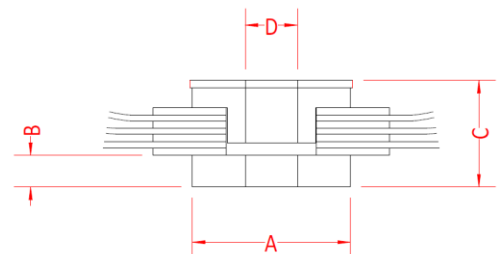
# Type 'Y' and 'YNS' Standard Range



Standard Range - Type 'Y' Mount only without fixing kit

Part Number	NATO Stock Number	Nominal Rating	Supported Mass Range	Dimensions, mm						Approx. weight
				H Unloaded	H Loaded	Length	Width	Bolt, Top	Bolt, base	
			kg							kg
14/920U	5340-99-778-9769	10	9 – 18	134	124	203	51	M8	M8	0.95
14/921U	5340-99-778-9770	20	18 – 25	134	124	203	51	M8	M8	1.22
14/922U	5340-99-778-9771	45	35 – 55	166	151	216	51	M10	M12	1.44
14/923U	5340-99-778-9772	70	55 – 75	166	151	216	51	M10	M12	1.55
14/924U	5340-99-778-9773	110	90 – 125	166	151	216	51	M10	M12	1.72
14/925U	5340-99-778-9774	180	135 – 250	228	219	297	102	M16	M20	8.39
14/926U	5340-99-778-9775	320	250 – 380	228	214	297	102	M16	M20	8.97
14/927U	5340-99-778-9776	450	380 - 500	228	214	297	102	M16	M20	9.87

Rating	Dimensions, mm			
	A	B	C	D
kg				
10, 20	31.8	9.5	21.5, 21.5, 22.5	9
45, 70, 110	31.8	9.5	23.8, 24.8, 26.2, 26.8	13
180, 320, 450	63.5	12.7	39, 41, 43	21



Please see page 7 for fixing kits that must be used to install the Type 'Y' mount.

DEFENCE DYNAMICS

shiftec.com

sales.dd@shiftec.com

MEMBER OF

While care has been taken to ensure that the information contained in this publication is accurate, we do not accept responsibility or liability for information which is found to be misleading. Specifications can change without notice.

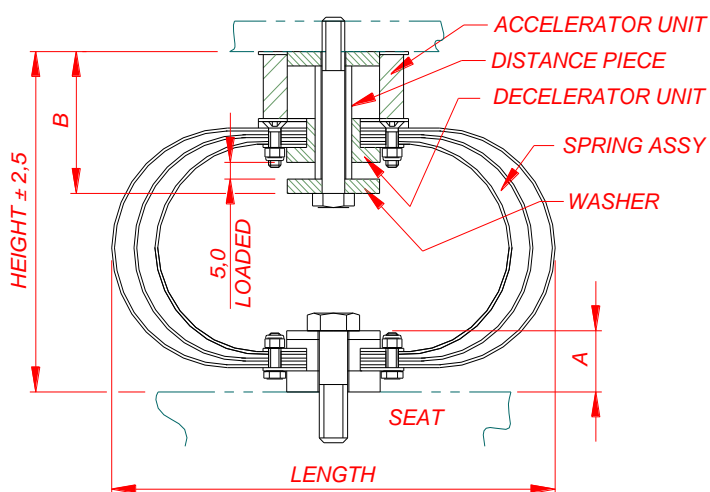




SHIFTEC

# Type 'Y' and 'YNS'

## Type 'Y' Mount with Type 1 Fixing Kit

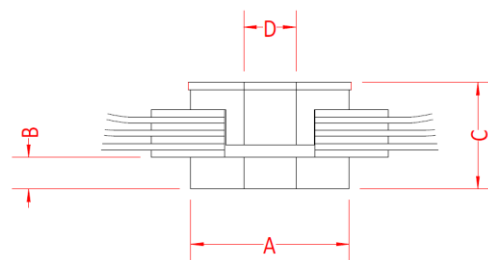


Please note that the mount is not supplied with fixing bolts and are shown above for illustration only.

'Y' Mount complete with Type 1 Fixing Kit

Part Number	NATO Stock Number	Nominal Rating	Supported Mass Range	Dimensions, mm							
				H Unloaded	H Loaded	Length	Width	A	B	Bolt, Top	Bolt, base
			kg								
14/950U	Not allocated	10	9 – 18	134	124	203	51	21.5	51	M8	M8
14/951U	Not allocated	20	18 – 25	134	124	203	51	22.5	52	M8	M8
14/952U	5340-99-134-9145	45	35 – 55	166	151	216	51	23.8	71	M10	M12
14/953U	5340-99-735-0650	70	55 – 75	166	151	216	51	24.8	71	M10	M12
14/954U	5340-99-763-8176	110	90 – 125	166	151	216	51	26.2	71	M10	M12
14/955U	5340-99-961-2238	180	135 – 250	228	219	297	102	39	97	M16	M20
14/956U	Not allocated	320	250 – 380	228	214	297	102	41	97	M16	M20
14/957U	Not allocated	450	380 - 500	228	214	297	102	43	97	M16	M20

Rating	Dimensions, mm			
kg	A	B	C	D
10, 20	31.8	9.5	21.5, 21.5, 22.5	9
45, 70, 110	31.8	9.5	23.8, 24.8, 26.2, 26.8	13
180, 320, 450	63.5	12.7	39, 41, 43	21

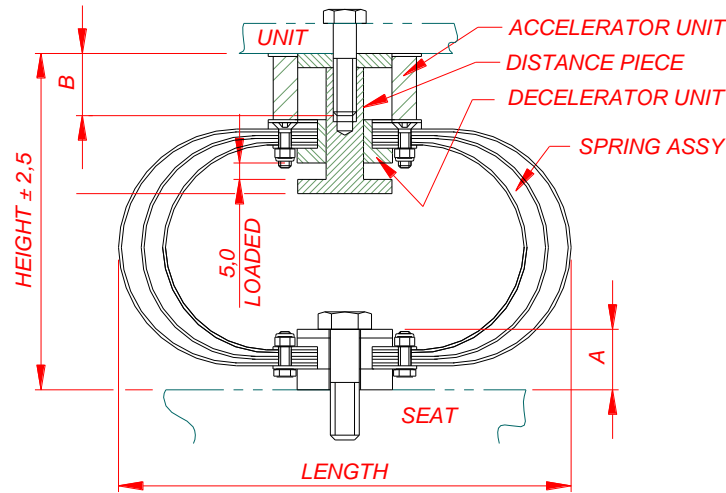




SHIFTEC

# Type 'Y' and 'YNS'

## Type 'Y' Mount with Type 2 Fixing Kit

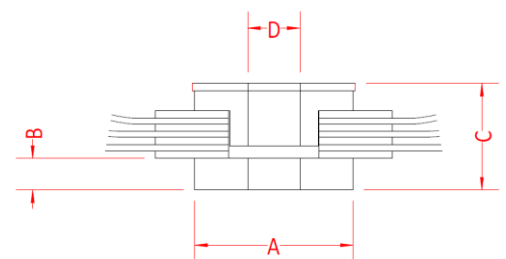


Please note that the mount is not supplied with fixing bolts and are shown above for illustration only.

'Y' Mount complete with Type 2 Fixing Kit

Part Number	NATO Stock Number	Nominal Rating	Supported Mass Range	Dimensions, mm							
				H Unloaded	H Loaded	Length	Width	A	B	Bolt, Top	Bolt, base
14/960U	5340-99-145-1704	10	9 – 18	134	124	203	51	21.5	28	M8	M8
14/961U	5340-99-320-4485	20	18 – 25	134	124	203	51	22.5	28	M8	M8
14/962U	5340-99-762-5586	45	35 – 55	166	151	216	51	23.8	38	M10	M12
14/963U	5340-99-600-4347 5340-99-967-7702	70	55 – 75	166	151	216	51	24.8	38	M10	M12
14/964U	5340-99-477-5217 5340-99-700-7155	110	90 – 125	166	151	216	51	26.2	38	M10	M12
14/965U	5340-99-142-6252	180	135 – 250	228	219	297	102	39	48	M16	M20
14/966U	5340-99-720-4876 5340-99-874-3026	320	250 – 380	228	214	297	102	41	48	M16	M20
14/967U	5340-99-428-2122 5340-99-786-4199	450	380 - 500	228	214	297	102	43	48	M16	M20

Rating	Dimensions, mm			
kg	A	B	C	D
10, 20	31.8	9.5	21.5, 21.5, 22.5	9
45, 70, 110	31.8	9.5	23.8, 24.8, 26.2, 26.8	13
180, 320, 450	63.5	12.7	39, 41, 43	21



DEFENCE DYNAMICS

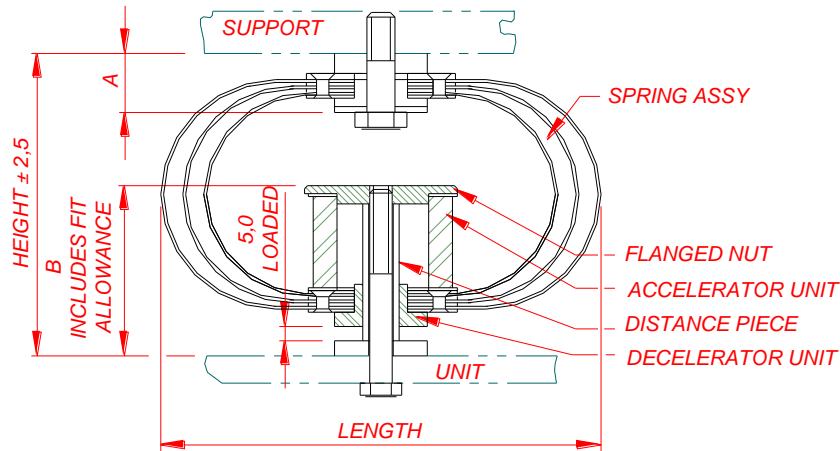
shiftec.com

sales.dd@shiftec.com

MEMBER OF

While care has been taken to ensure that the information contained in this publication is accurate, we do not accept responsibility or liability for information which is found to be misleading. Specifications can change without notice.



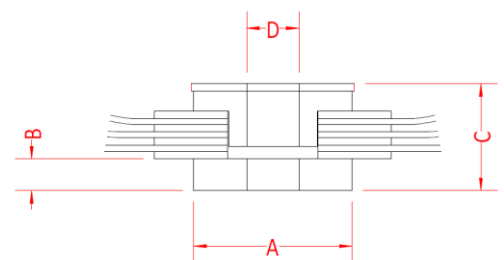


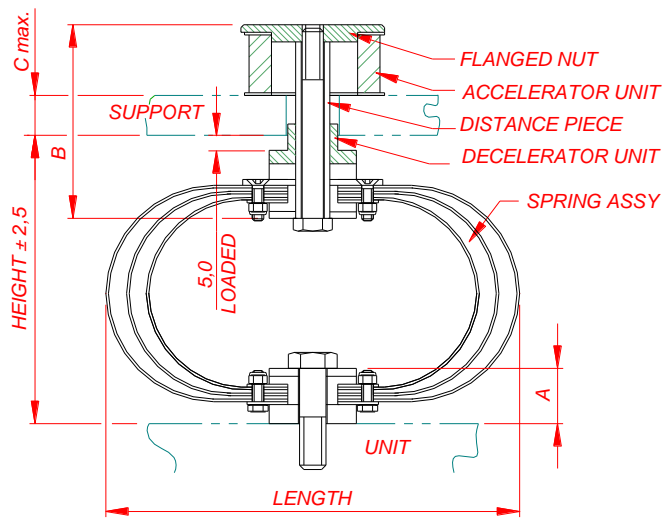
Please note that the mount is not supplied with fixing bolts and are shown above for illustration only.

'YNS' Type 1 Mount (includes fixing kit)

Part Number	NATO Stock Number	Nominal Rating	Supported Mass Range	Dimensions, mm							
				H Unloaded	H Loaded	Length	Width	A	B	Bolt, Top	Bolt, base
			kg								
14/970U	5340-99-051-2393	10	9 – 18	120	130	203	51	21.5	59	M8	M8
14/971U	5340-99-667-1732	20	18 – 25	120	130	203	51	22.5	59	M8	M8
14/972U	5340-99-010-4255	45	35 – 55	140	155	216	51	23.8	76	M12	M10
14/973U	5340-99-629-9763 5340-99-977-5098	70	55 – 75	140	155	216	51	24.8	76	M12	M10
14/974U	5340-99-127-4444 5340-99-967-6309 5340-99-337-0854	110	90 – 125	140	155	216	51	26.2	76	M12	M10
14/975U	5340-99-253-1817 5340-99-464-3488	180	135 – 250	205	215	297	102	39	106.5	M20	M16
14/976U	Not allocated	320	250 – 380	205	220	297	102	41	106.5	M20	M16
14/977U	5340-99-325-2108	450	380 - 500	205	220	297	102	43	106.5	M20	M16

Rating	Dimensions, mm			
kg	A	B	C	D
10, 20	31.8	9.5	21.5, 21.5, 22.5	9
45, 70, 110	31.8	9.5	23.8, 24.8, 26.2, 26.8	13
180, 320, 450	63.5	12.7	39, 41, 43	21



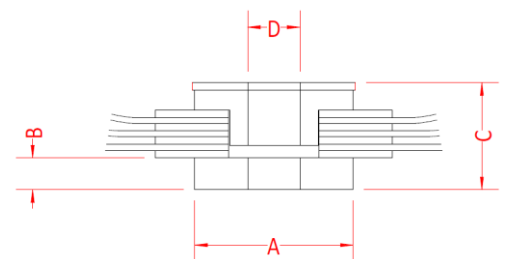


Please note that the mount is not supplied with fixing bolts and are shown above for illustration only.

'YNS' Type 2 Mount (includes fixing kit)

Part Number	NATO Stock Number	Nominal Rating	Supported Mass Range	Dimensions, mm							
				H Unloaded	H Loaded	Length	Width	A	B	Bolt, Top	Bolt, base
14/980U	Not allocated	10	9 – 18	120	130	203	51	21.5	71	M8	M8
14/981U	Not allocated	20	18 – 25	120	130	203	51	22.5	72	M8	M8
14/982U	Not allocated	45	35 – 55	166	151	216	51	23.8	91	M10	M12
14/983U	5340-99-168-5771	70	55 – 75	166	151	216	51	24.8	92	M10	M12
14/984U	5340-99-872-8312	110	90 – 125	166	151	216	51	26.2	93	M10	M12
14/985U	5340-99-147-2458	180	135 – 250	205	214.4	297	102	39	133	M16	M20
14/986U	Not allocated	320	250 – 380	205	219.6	297	102	41	135	M16	M20
14/987U	Not allocated	450	380 - 500	205	220.2	297	102	43	137	M16	M20

Rating	Dimensions, mm			
	A	B	C	D
kg				
10, 20	31.8	9.5	21.5, 21.5, 22.5	9
45, 70, 110	31.8	9.5	23.8, 24.8, 26.2, 26.8	13
180, 320, 450	63.5	12.7	39, 41, 43	21



### INTRODUCTION

A fixing kit is required to install a Type 'Y' mount, which are available in two types (1 and 2).

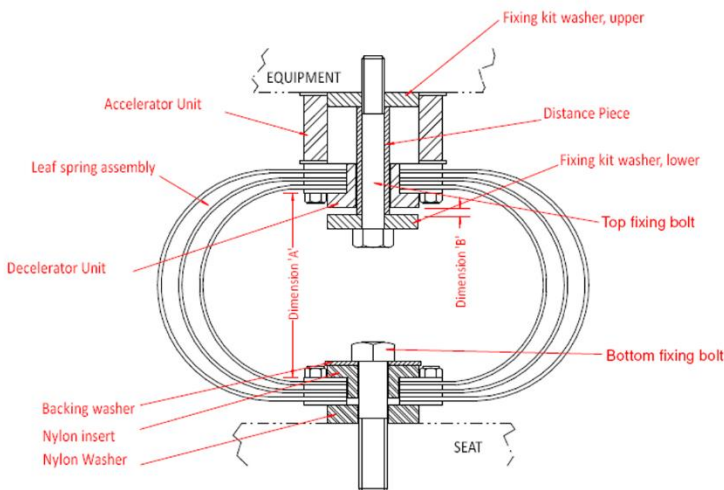
The choice of fixing kit is defined by the method of bolting at the top of the mount, as shown in the diagrams below.

The table below lists the part numbers for the fixing kits when ordered as a separate item.

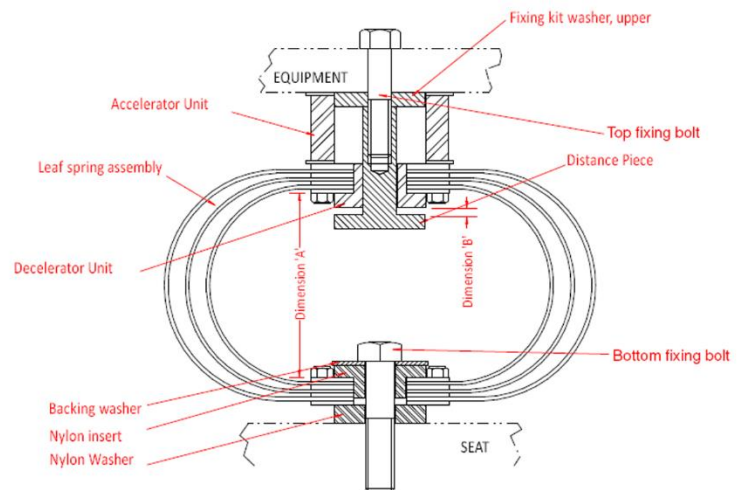
Please note that the fixing bolts, nuts, washers etc are not supplied. Each fixing kit includes the distance piece and washer(s) only.

**Fixing Kits – Required for use with standard 'Y' Mount**

Part Number	NATO Stock Number	Fixing Type No.	For use with Y Mount size(s)
14/990	5340-99-861-9603	1	10, 20
14/994	5340-99-131-1422	2	10, 20
14/991	5340-99-702-0730	1	45
14/995	5340-99-551-2649	2	45
14/992	Not allocated	1	70, 110
14/996	Not allocated	2	70, 110
14/993	5340-99-968-1694	1	180, 320, 450
14/997	5340-99-968-1695	2	180, 320, 450



Type 'Y' mount with Type 1 Fixing Kit



Type 'Y' mount with Type 2 Fixing Kit