



BRIEF INFORMATION

Signal horn S70

- Bundled far-reaching sound
- Small space miracle
- Excellent size/performance ratio

PRODUCT FEATURES

Application


Signal horns are a mandatory part of a vehicle's safety. A particularly perceptible sound is necessary in order to be able to warn other road users efficiently in dangerous situations. Our signal horns offer you a high level of functional reliability.

Design and function

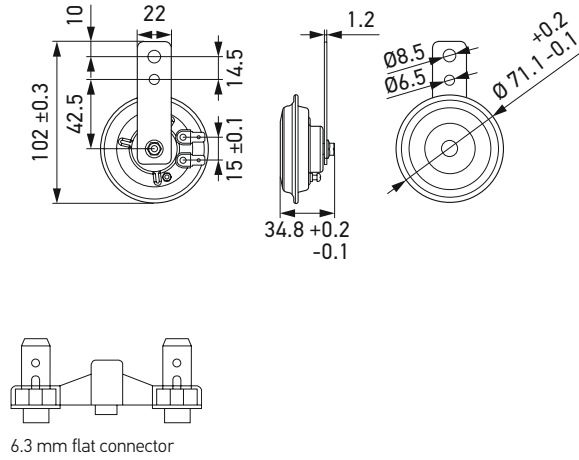
Horns are powered by battery current, which is normally controlled by the steering wheel via a control current. This is directed to a relay, which transmits the entire control current so that no voltage drops occur. The control current activates the solenoid in the horn and generates a magnetic field that attracts a metal core (armature) to which the steel diaphragm of the horn is fastened. In an attracted state, the power supply is interrupted, the magnetic field breaks down, the armature and diaphragm move back to the rest position and the power supply is re-established. The process then begins again. This causes an oscillation, which can be heard as a low or high sound.

TECHNICAL DETAILS


Technical data

Diameter	70 mm
Operating voltage	12 V
Current consumption	2.5 A max.
Power consumption	30 W
Operating temperature	-40 °C to +90 °C
Protection class	IPX9K, IPX7
Housing material	CRCS class EDD
Frequency range	420 Hz (high tone)
Sound pressure level @ 2 m	112 dB (A)
Lifetime	100,000 cycles
Type approval	ECE R28,  006053

Dimensional sketch



PROGRAM OVERVIEW

Product image	Description	Part number	VPE*
	12 V, 420 Hz, 6.3 mm flat connector	3AL 922 196-011	1

* Packaging unit