



BRIEF INFORMATION

Module 90i LED, installation

- LED installation worklight
- Powerful light output
- Compact design despite integrated electronics

PRODUCT FEATURES

The Module 90i LED is a compact installation worklight with high light output. The installation housing was sized to supplement the existing 90 Module series from HELLA with an LED worklight.

The black aluminium housing features cooling fins which ensure the required heat dissipation from the four high-power multichip LEDs. In addition, temperature sensors protect the worklight from overheating. Only in this way can the long service life of the LEDs and a safe working environment at night be guaranteed.

Thanks to a much higher light output of 3,800 lumen, the Module 90i LED can even replace xenon worklights, at a power consumption of just 36 watt. This makes this worklight ideal for use on battery-powered vehicles or on vehicles where the alternator is already under a heavy load. The light is distributed by a specially developed multi-faceted reflector, which ensures homogeneous illumination.

The light can be operated at both 12 V and 24 V. The integrated electronics protect the device in the event of polarity inversion and guarantee constant brightness, even when operating voltage fluctuates between 9 and 32 volts.

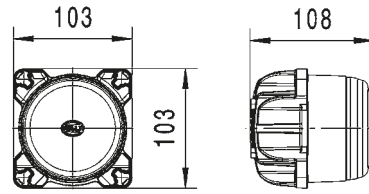
With a colour temperature of 6,500 Kelvin, the light from the LED worklight is very similar to daylight. This helps to distinguish colours more easily in the dark, and makes sensory perception through the human eyes much easier. In turn, this prevents the eyes from tiring quickly when working at night.

TECHNICAL DETAILS

Technical Data

Operating voltage/ Rated voltage	9 – 32 V
Light source type	4 high-performance multichip LEDs
Power consumption	36 W
Light output	3,800 lm
Colour temperature	6,500 Kelvin
Protection class	IP 6K9K and IP 6K8
Type approval	Ⓜ, ECE-R10
Housing	Aluminium die cast
Light exit area	90 mm diameter
Weight	630 g

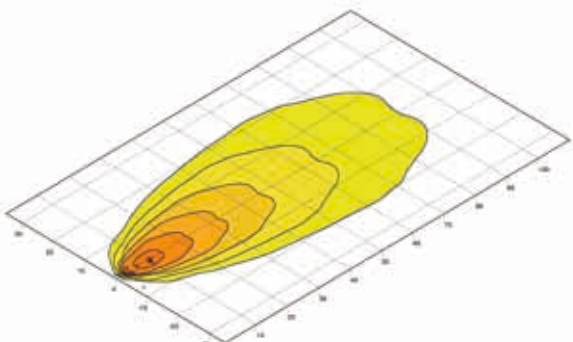
Dimensional sketch



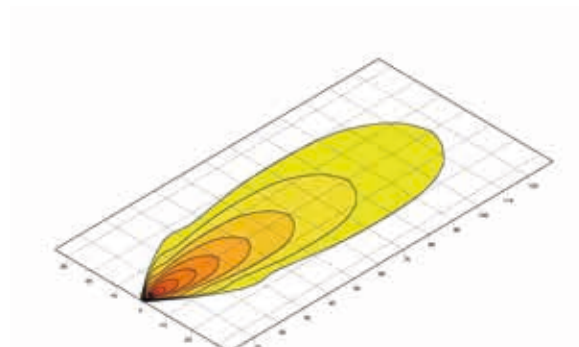
RANGE OVERVIEW

1G0 996 263-...	-501	-511
Close-range illumination	X	-
Long-range illumination	-	X
DEUTSCH plug	X	X
Nylon lens	X	X
Protected against overheating	X	X
Polarity reversal protection	X	X

LIGHT DISTRIBUTION



Close-range illumination



Long-range illumination

