



## BRIEF INFORMATION

### Bi-LED low beam and high beam headlamp NovoLED

- Quick and easy installation: 1:1 replaceable with matching halogen products\*
- Multiple mounting possibilities for various application fields
- Modular concept for easy customized modifications like housing design, mounting, light distribution, etc.
- Robust housing for harsh environment

## PRODUCT FEATURES

This cost-effective Bi-LED headlamp comes in a surprisingly robust package. With its universal and compact design, the HELLA Bi-LED low beam and high beam headlamp NovoLED can replace existing halogen units. The low mounting depth as well as the wide range of mounting variants make this headlamp versatily applicable.

The housing and cover lens of the Bi-LED low beam and high beam headlamp NovoLED is made of special, light and corrosion-resistant plastics. Thanks to the weight reduction and higher energy efficiency, the Bi-LED low beam and high beam headlamp NovoLED also contributes towards reducing CO<sub>2</sub>.

This product meets high EMV requirements and is also protected against reverse polarity, dust and water. The high level of vibration resistance makes the Bi-LED headlamp suitable for universal applications like agricultural and heavy construction machinery.

On request, the manufacturer's logo can be engraved into the reflector to give the vehicle an individual touch.

\* Depends on vehicle geometry, needs to be checked in individually.

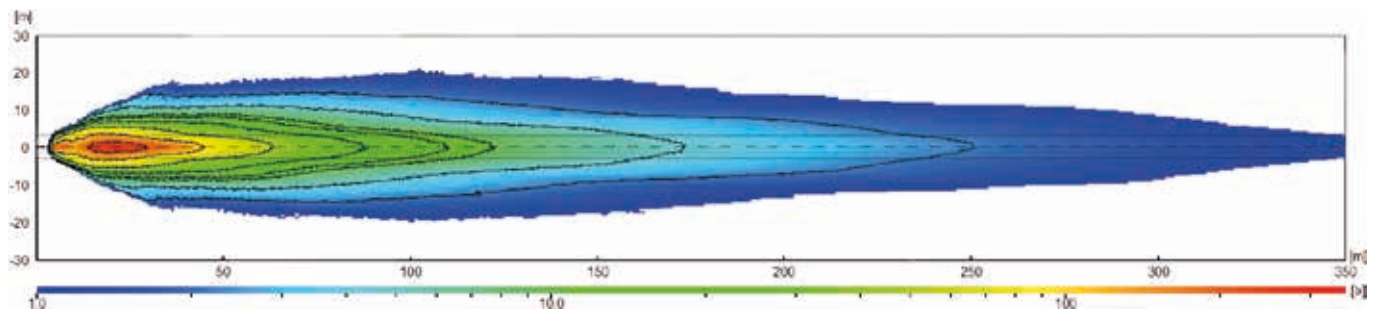
# APPLICATION EXAMPLES



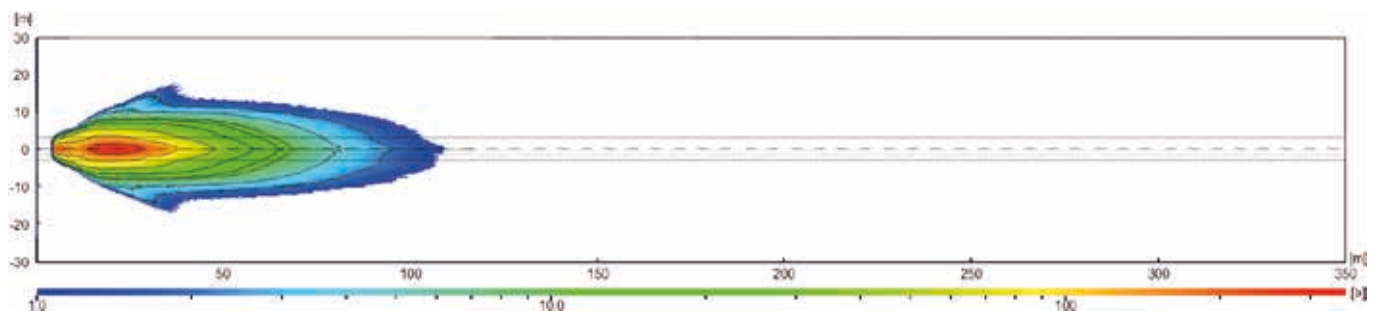
1. Flush mounting with metal carrier frame | 2. Flush mounting with plastic carrier frame | 3. Flush mounting

# LIGHT DISTRIBUTION

High beam



Low beam

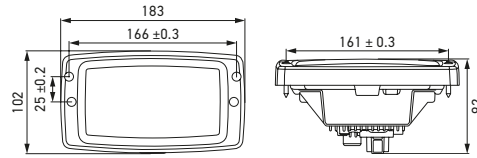


# TECHNICAL DETAILS

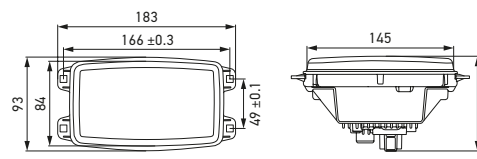


Technical data	
Operating voltage	Multivoltage, 10–32 V
Rated voltage	12 V and 24 V
Power consumption	High beam: 18 W max. Low beam: 13 W max.
Light function	Low beam, high beam
Light source	LED
Material	Plastic (PC black and transparent)
Color temperature	5,700 K
Weight	518 g base weight of the headlamp Deviates with additional components
Temperature range	-40 °C to +60 °C
Protection class	IP 6K9K
Type approval	ECE R149 (Class CS), SAE (ASABE)
EMC protection	ECE R10.06, CISPR 25 Class 4
Mounting	Various
Connection	3-pole DEUTSCH connector

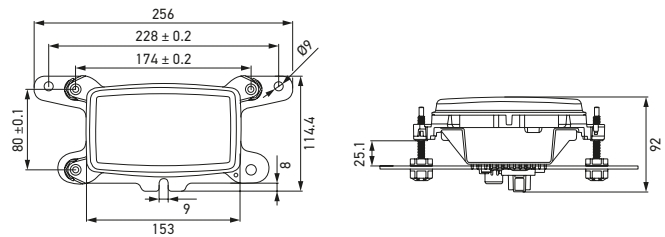
## Dimensional sketch



Flush mounting with plastic carrier frame



Flush mounting



Flush mounting with metal carrier frame

# PROGRAM OVERVIEW

Product picture	Type of mounting	Variant	Part number
	Flush mounting with plastic carrier frame		<b>1SB 327 210-001</b>
	Flush mounting		<b>1SB 327 210-011</b>
	Flush mounting with metal carrier frame	Left/ right	<b>1SB 327 210-041</b>
	Bottom mounting		<b>On request</b>