



LED LIGHT BAR 470 PO

ECE type-approved

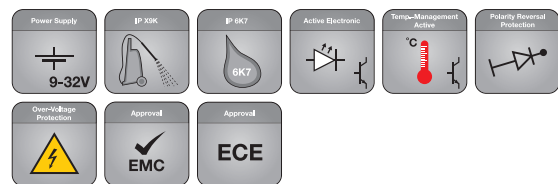
BRIEF INFORMATION

High beam headlamp with position light LED Light Bar 470 PO

- LED Light Bar 470 PO with universal bracket
- With striking LED position light
- Low profile and low weight

PRODUCT FEATURES

- LED high beam headlamp designed as a compact light strip
- Low profile and low weight
- Developed for the special requirements of off-road vehicles and for the aerodynamic installation on truck cab roofs
- For off-road use, submersible (fording ability up to a water depth of 1 m for up to 2 hours), IP X9K and IP 6K7
- With strong, high-power LED
- Effective dissipation of heat created by the LED electronics thanks to the thermo-conductive plastic housing
- Multi-voltage: 9 – 33 V
- ECE type-approved (ECE R149 high beam, ECE R148 position light, ECE R10 EMC)
- Power consumption at 12 V:
Position light 6 W and high beam 36 W
- Power consumption at 24 V:
Position light 6 W and high beam 36 W



SCOPE OF SUPPLY

- Individual headlamp with 2,500 mm, 3-pin connecting cable (with open ends)
- Including bracket set
- Integral LED light sources

PROGRAM OVERVIEW

LED Light Bar 470 PO, multi-voltage 12 / 24 V, 36 W

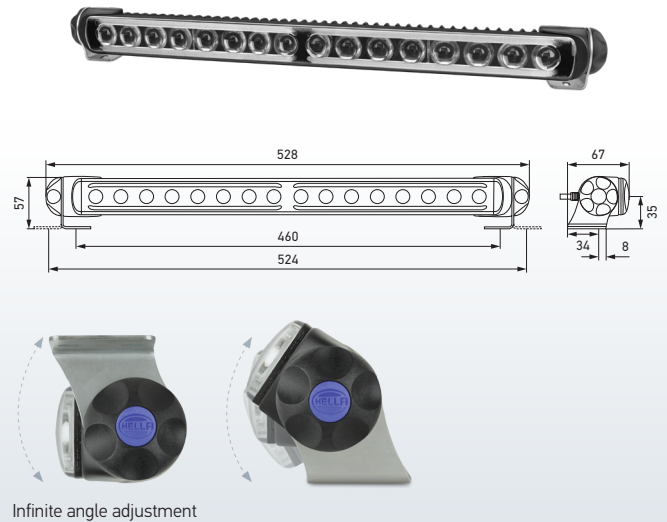
With universal bracket

LED high beam headlamp (ECE Ref. 25)

1FJ 958 140-001

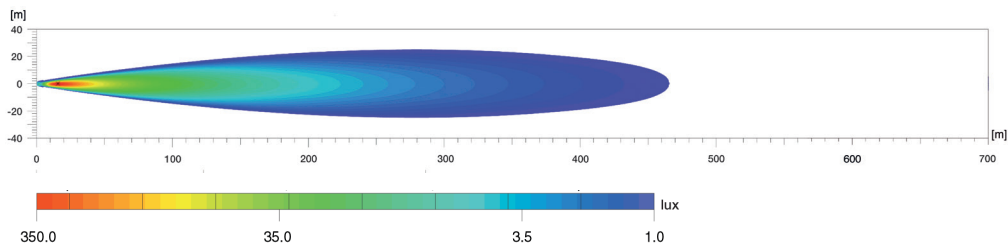
LED LIGHT BAR 470 PO WITH UNIVERSAL BRACKET

- Including universal bracket set (also available as spare part 8HG 958 139-841)
- Continuously adjustable for all mounting positions
- Suitable for upright or pendant mounting and also for installation on surfaces of any angle
- Compact, with a variety of mounting options
- With drilling template for easy mounting
- Weight: 900 g



LIGHT DISTRIBUTION

LED Light Bar 470 PO, LED high beam headlamp with reference number 25



Lux is the unit of illuminance.

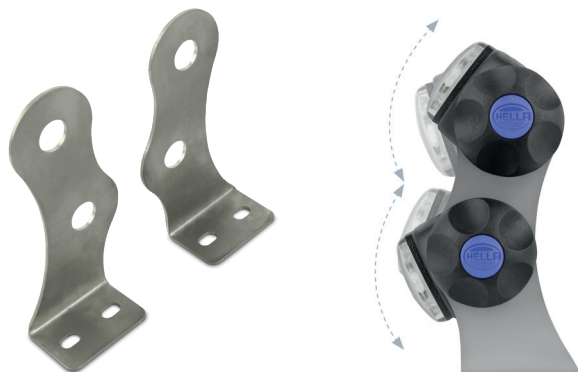
It indicates the luminous flux that meets a specific surface from the light source. An example of this is that an office should be illuminated with at least 500 Lux and the human eye can still read a newspaper without any problems at 1 Lux. The values below the lux bar indicate where the appropriate illuminance is reached in the light distribution diagrams.

Reference number (Ref.)

The reference number (Ref.) is a value that refers to high beam headlamps. Under ECE regulations, this reference number may not exceed the upper limit of 100 per vehicle. This figure includes the two values for the standard high beam (left and right headlamp) plus those of any other high beam headlamps that are mounted. The appropriate value is engraved on the cover lens of each approved headlamp.

ACCESSORIES*

BRACKET FOR DOUBLE MOUNTING



Mounting brackets enable the continuously variable adjustment of illumination.

SCOPE OF SUPPLY

2 x stainless steel double mounting angle
(for mounting 2 LED light bars with universal bracket)

8HG 958 128-811

CONNECTING ELEMENT



The connector set facilitates the horizontal mounting of multiple LED light bars, allowing them to be aligned exactly without any level differences.



SCOPE OF SUPPLY

2 x connecting element (plastic)
1 x M8 (20 mm) stainless steel fillister head screw

8HG 958 139-881

* Accessories cannot be used in regions where ECE regulations apply.



See the light!
Auxiliary headlamps from HELLA. The right light for every situation. Try them out online now!

www.hella.com/upc

www.hella.com/truck

www.hella.com/offroad

www.hella.com/eliver