



THE NEW LIGHTSTYLE

LUMINATOR  | RALLYE 3003 

## LUMINATOR LED

---

WITH ITS INDIVIDUAL DESIGN AND PERFORMANCE, THIS POWERHOUSE SETS TRENDS THAT MEET EVEN THE HIGHEST STANDARDS.

- Sturdy, high-quality full-metal headlamp with housing and fixing bracket of zinc diecasting
- Fixing bracket with tool-free "simple pre-adjustment" for precision adjustment of the tilt setting
- Vibration-resistant even under extreme conditions
- Switched on, the clear, cold-white radiating LED light has a characteristic lighting design by day and night
- Immediate response for attention-grabbing headlight flashing
- Replaceable LED headlamp insert with shock-resistant PC cover lens
- Weight 2,700 g





## RALLYE 3003 LED

---

THE LIGHTWEIGHT WITH A REAL PUNCH.  
THE NEW RALLYE 3003 LED WITH THE  
UNMISTAKABLE LIGHTING DESIGN.

- NEW: as a full LED high-beam headlamp with LED position light
- Headlamp with impact-resistant housing made of thermoplastic with a sheet steel fixing bracket
- Switched on, the clear, cold-white radiating LED light has a characteristic lighting design by day and night
- Immediate response for attention-grabbing headlight flashing
- Replaceable LED headlamp insert with shock-resistant PC cover lens
- Weight: 1,600 g

Shown here is the Luminator LED, Metal





Shown here is the Luminator LED, Chromium



## LUMINATOR LED

LED high-beam headlamp with LED position light, with connecting cable, mounted fixing bracket, mounting instructions, multi-voltage 12 / 24 V, protection classes: IP X9K, IP 6K7

## RALLYE 3003 LED

LED high-beam headlamp with LED position light, with connecting cable, mounted fixing bracket, mounting instructions, multi-voltage 12 / 24 V, protection classes: IP X9K, IP 6K7

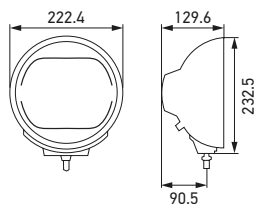
### NEW!

The Rallye 3003 with full LED technology

## HEADLAMP INSERTS

LED high-beam headlamp insert with LED position light, with accessories for electrical connection, mounting instructions.

Also for upgrading the Luminator Halogen and Rallye 3003 Halogen (see page 11).



Metal

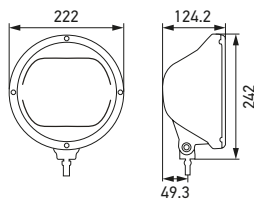
ECE Ref. 25      **1F8 016 560-001**

ECE Ref. 50      **1F8 016 560-011**

Chromium

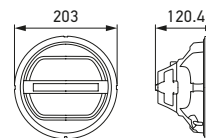
ECE Ref. 25      **1F8 016 560-021**

ECE Ref. 50      **1F8 016 560-031**



ECE Ref. 25      **1F8 016 797-001**

ECE Ref. 50      **1F8 016 797-011**



Spare parts

With LED position light,  
ECE Ref. 25      **1F8 241 400-011**

With LED position light,  
ECE Ref. 50      **1F8 241 429-011**

Without position light,  
Flood\*      **1F8 241 430-011**

Without position light,  
Pencil Beam\*      **1F8 241 449-011**

\* Only for off-road applications  
(not for public road traffic)

### Power consumption

For 12 V: position light 2.4 W and high beam 14.5 W | For 24 V: position light 5 W and high beam 14.5 W

### Power consumption

High beam 32.4 W

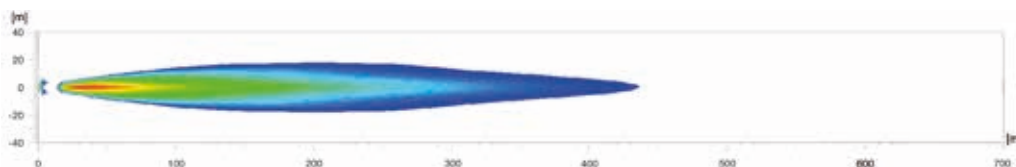
## ECE REFERENCE NUMBER

The reference number (Ref.) is a value that refers to a high-beam headlamp. Under ECE regulations, this reference number may not exceed the upper limit of 100 per vehicle. This figure includes the two values for the standard high beam (left and right headlamp) plus those of any other high-beam headlamps that are mounted. The appropriate value is engraved on the cover lens of each approved headlamp.

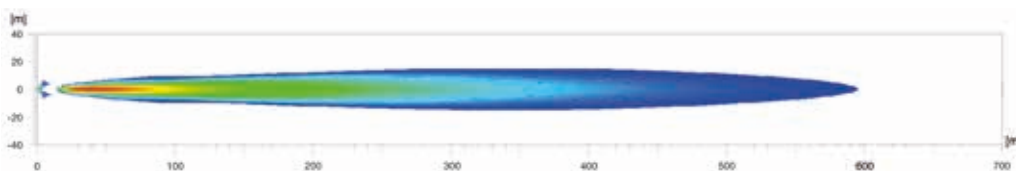


## LUMINATOR LED | LIGHT DISTRIBUTIONS

The light distribution shows 2 active high-beam headlamps in each case.



ECE Ref. 25



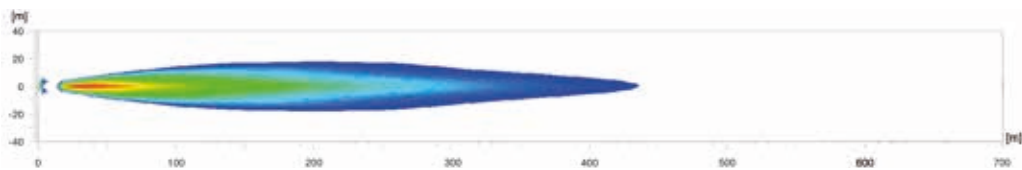
ECE Ref. 50



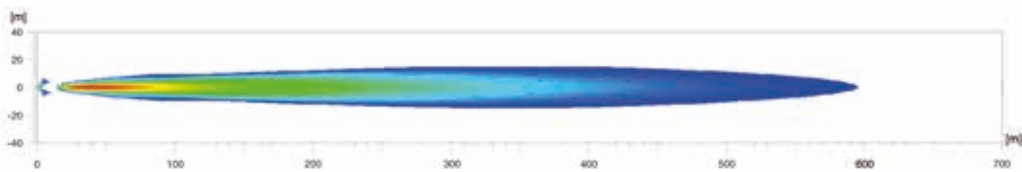


## RALLYE 3003 LED | LIGHT DISTRIBUTIONS

The light distribution shows 2 active high-beam headlamps in each case.



ECE Ref. 25



ECE Ref. 50







**EdgeLight technology:**  
For a more striking appearance  
of the LED position light.



## STRIKING LIGHTING DESIGN ON THE ROOF BAR

---

Roof bars are particularly suitable for the safe mounting of HELLA auxiliary driving lamps. Our example shows 2 x LED Luminator Chromium when switched off and 2 x LED Luminator Chromium with LED position light switched on.

When selecting and configuring the auxiliary driving lamps, please observe the applicable statutory regulations.



## HEADLAMP INSERTS

The headlamp inserts serve as an upgrade for halogen auxiliary headlamps of the HELLA Luminator and Rallye 3003 series. They can also be used as spare parts for the new HELLA Luminator LED and for the Rallye 3003 LED.

### EASY UPGRADE FROM HALOGEN TO FULL LED!

Replacing a headlamp insert is done in just a few simple steps - please allow 15 - 20 minutes to complete this task:



1. Loosen the 4 screws from the lens-retaining rim
2. Then remove the lens-retaining rim
3. Remove the halogen insert from the housing and loosen the cable plug connections
4. Connect the cabling from the new LED insert with the existing wiring using the enclosed crimp connectors (in accordance with the enclosed mounting instructions)
5. Place the LED insert in the housing
6. Replace the lens-retaining rim
7. Tighten the 4 securing screws

## UPGRADE – LUMINATOR HALOGEN

Ø 222 mm

<b>Halogen with LED position light (LED-PO)</b>	
CELIS Metal (ECE Ref. 17.5) with clear cover lens	<b>1F8 007 560-201</b>
CELIS Chromium (ECE Ref. 17.5) with clear cover lens	<b>1F8 007 560-211</b>
LED-PO Chromium (ECE Ref. 25) with clear cover lens	<b>1F8 007 560-451</b>
<b>Halogen</b>	
Metal (ECE Ref. 17.5) with blue cover lens	<b>1F8 007 560-011</b>
Chromium (ECE Ref. 17.5) with clear cover lens	<b>1F8 007 560-331</b>
Chromium (ECE Ref. 17.5) with clear cover lens	<b>1F8 007 560-341</b>
<b>With position light (W5W)</b>	
Metal (ECE Ref. 37.5) with clear cover lens	<b>1F8 007 560-301</b>
Chromium (ECE Ref. 37.5) with clear cover lens	<b>1F8 007 560-311</b>
Chromium (ECE Ref. 37.5) with blue cover lens	<b>1F8 007 560-321</b>
Metal (ECE Ref. 50) with clear cover lens	<b>1F8 007 560-401</b>
Chromium (ECE Ref. 50) with clear cover lens	<b>1F8 007 560-411</b>
Metal (ECE Ref. 37.5) with profiled lens	<b>1F8 007 560-041</b>
Chromium (ECE Ref. 37.5) with profiled lens	<b>1F8 007 560-051</b>
Chromium (ECE Ref. 37.5) with profiled blue lens	<b>1F8 007 560-131</b>

## UPGRADE – RALLYE 3003 HALOGEN

Ø 222 mm

<b>With LED position light (LED-PO)</b>	
CELIS Chromium (ECE Ref. 17.5) with clear cover lens	<b>1F8 009 797-451</b>
LED-PO Silver grey (ECE Ref. 25) with clear cover lens	<b>1F8 009 797-421</b>
LED-PO Chromium (ECE Ref. 25) with clear cover lens	<b>1F8 009 797-431</b>
<b>With position light (W5W)</b>	
Silver grey (ECE Ref. 17.5) with clear cover lens	<b>1F8 009 797-121</b>
Silver grey (ECE Ref. 17.5) with blue cover lens	<b>1F8 009 797-131</b>
Silver grey (ECE Ref. 37.5) with clear cover lens	<b>1F8 009 797-021</b>
Chromium (ECE Ref. 37.5) with clear cover lens	<b>1F8 009 797-101</b>
Silver grey (ECE Ref. 37.5) with blue cover lens	<b>1F8 009 797-031</b>
Chromium (ECE Ref. 37.5) with blue cover lens	<b>1F8 009 797-111</b>
Silver grey (ECE Ref. 37.5) with blue cover lens	<b>1F8 009 797-331</b>
Chromium (ECE Ref. 37.5) with blue cover lens	<b>1F8 009 797-351</b>
Silver grey (ECE Ref. 50) with clear cover lens	<b>1F8 009 797-321</b>
Chromium (ECE Ref. 50) with clear cover lens	<b>1F8 009 797-341</b>

**HELLA GmbH & Co. KGaA**

Rixbecker Straße 75  
59552 Lippstadt, Germany  
Tel.: +49 2941 38-0  
Fax: +49 2941 38-7133  
Internet: [www.hella.com](http://www.hella.com)

© HELLA GmbH & Co. KGaA, Lippstadt  
922 999 141-967 J01616/DRA/08.19/0.75  
Subject to technical and price modifications  
Printed in Germany

**THE RIGHT LIGHT FOR EVERY SITUATION.**

Auxiliary headlamps from HELLA. Find out more now!

[www.hella.com/lightstyle](http://www.hella.com/lightstyle) | [www.hella.com/truck](http://www.hella.com/truck) | [www.hella.com/offroad](http://www.hella.com/offroad) | [www.hella.com/eliver](http://www.hella.com/eliver) | [www.hella.com/upc](http://www.hella.com/upc)