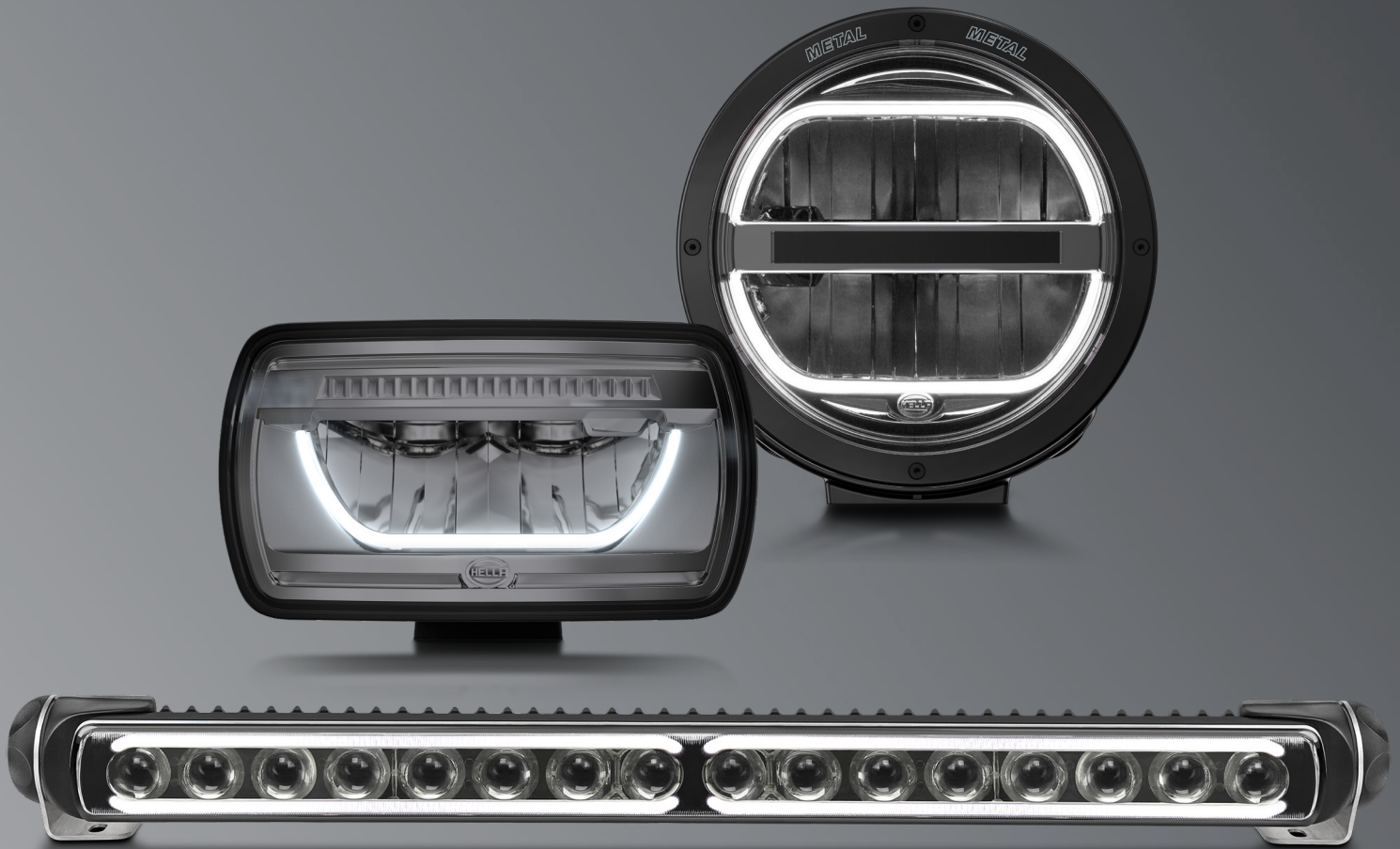


A man with a full beard and extensive tattoos on his arms is standing in front of the grille of a dark blue truck. He is wearing a blue baseball cap with a white smiley face logo and a denim shirt. He has his hands near his face, as if adjusting his cap or beard. The truck's grille features a prominent, illuminated LED light bar. Above the grille, four individual LED lights are visible on the truck's hood.

THE NEW STREETSMILE

JUMBO LED | LUMINATOR LED | LED LIGHT BAR 470 PO



JUMBO LED | LUMINATOR LED | LED LIGHT BAR 470 PO

HELLA HIGH BEAM HEADLAMPS

THE NEW LIGHTSTYLE FROM HELLA PROMISES ALL THIS:

- 100% LED TECHNOLOGY
- OPTIMAL LIGHT PERFORMANCE
- UNMISTAKABLE LIGHT SIGNATURE WITH HIGH RECOGNITION VALUE

INSPIRED BY THE IDEA OF MARRYING TOGETHER QUALITY AND STYLING AT THE HIGHEST POSSIBLE LEVEL, THIS NEW PRODUCT FAMILY CARRIES A CONSISTENT DESIGN SIGNATURE AND OFFERS THE RIGHT SOLUTION FOR EVERY KIND OF TASTE AND FOR EVERY KIND OF VEHICLE!

JUMBO LED | THE NEW AUXILIARY HEADLAMP WITH THE BRILLIANT, SEISMIC SMILE

Just the name says it all: the new Jumbo LED is a full LED headlamp with a special kind of radiance – delivering luminous efficiency even more unconditionally and absolutely than its legendary predecessor. Let's see you smile – just convert now to the new Jumbo LED.

LUMINATOR LED | DESIGN AND PERFORMANCE TO MEET THE HIGHEST STANDARDS

More safety, less fatigue. The computer-optimised, high-boost reflector of the LED high beam headlamp enables the attaining of optimal lighting performance and more comforting safety in the dark. High-power LEDs now boast even more luminous flux and illuminate the road evenly.

LED LIGHT BAR 470 PO | THE NEW AUXILIARY HEADLAMP FOR LONG-DISTANCE VISION

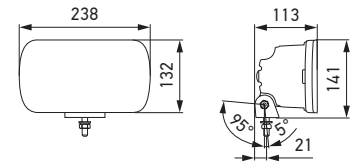
Whether you are off-road or driving on asphalt surfaces, the LED Light Bar 470 opens up new perspectives for you. Developed for the special requirements of off-road vehicles and for the aerodynamic installation on truck cab roofs. This high beam headlamp with the striking double LED light signature, epitomises compact performance presented in a really stylish design. Let the adventure begin! Why not go for style with vision and choose the LED light bar with the unique light signature?

JUMBO LED

JUMBO LED – THE NEW AUXILIARY HEADLAMP WITH THE BRILLIANT, SEISMIC SMILE

SCOPE OF DELIVERY | LED high beam headlamp with LED position light, including 800 mm 3-pin connecting cable (with open ends), mounting materials, installation instructions

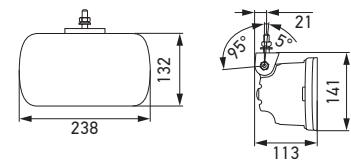
- Eye-catching and brilliantly bright position light thanks to innovative edge light technology
- Long-lasting light output
- Immediate response when headlight flashing operated
- Multi-voltage: suitable for 12 V and 24 V
- High beam with reference number 25 and with position light
- Particularly energy-efficient and fuel-saving
- Power consumption at 12 V:
Position light 1.3 W and high beam 8 W
- Power consumption at 24 V:
Position light 2.7 W and high beam 8 W
- ECE type-approved (ECE R149 high beam, ECE R148 position light, ECE R10 EMC)
- Low weight: 980 g



Upright mounting, tilt angle -5° to 95°

ECE Ref. 25

1FE 016 773-001



Pendant mounting, tilt angle -5° to 95°

ECE Ref. 25

1FE 016 773-011

EDGE LIGHT

Design patent

With characteristic
design cover

Impact-resistant
PC cover lens with
hard coating

Innovative EdgeLight
LED position light

Impact-resistant housing



EDGE LIGHT

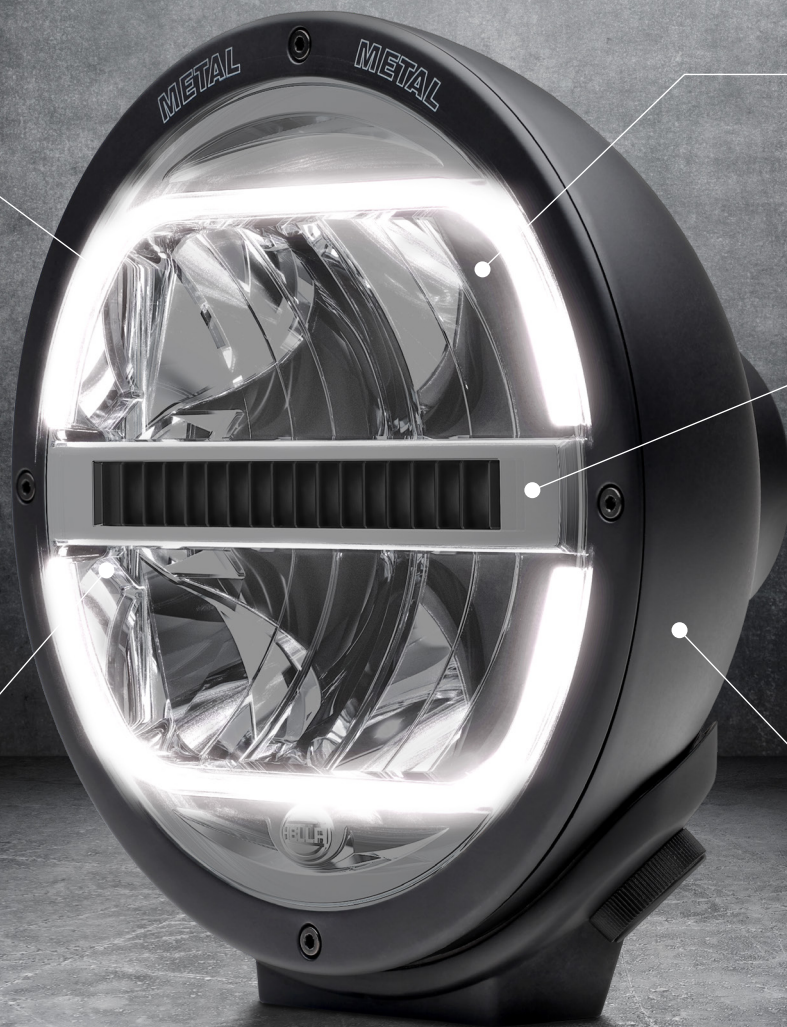
LED position light for a striking night-time design

High-boost reflector

Cooling strip for thermal management

Replaceable headlamp insert

Design patent

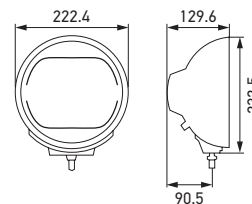


LUMINATOR LED

THE AUXILIARY HEADLAMP IN THE UNMISTAKABLE DESIGN AND THE EDGELIGHT POSITION LIGHT.

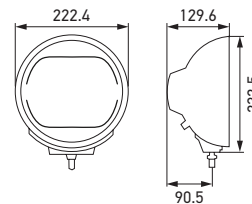
SCOPE OF DELIVERY | LED high beam headlamp with LED position light, including 3-pin connecting cable (with open ends), mounted fastening bracket, installation instructions

- Sturdy, high-quality full-metal headlamp with housing and zinc diecasting fixing bracket
- Fastening bracket with tool-free "comfort pre-adjustment" for precision adjustment of the tilt setting
- Vibration-resistant even under extreme conditions
- When switched on, the clear, cold-white brilliant LED light has a characteristic lighting design both by day and by night
- Immediate response for attention-grabbing headlight flashing
- Replaceable LED headlamp insert with impact-resistant PC cover
- ECE type-approved (ECE R112 high beam, ECE R7 position light, ECE R10 EMC)
- Weight 2,700 g



Metal, upright mounting, tilt angle $\pm 7^\circ$

ECE Ref. 25	1F8 016 560-001
ECE Ref. 50	1F8 016 560-011



Chromium, upright mounting, tilt angle $\pm 7^\circ$

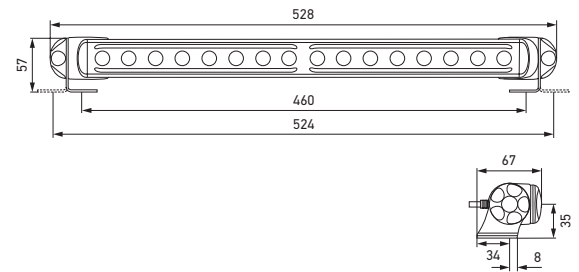
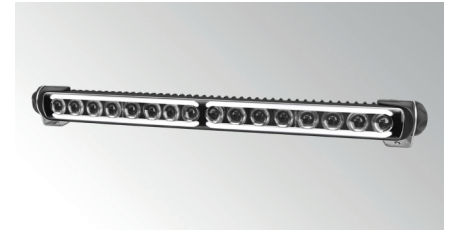
ECE Ref. 25	1F8 016 560-021
ECE Ref. 50	1F8 016 560-031

LED LIGHT BAR 470 PO

THE AUXILIARY HEADLAMP FOR LONG-DISTANCE VISION WITH THE STRIKING DOUBLE SIGNATURE OF THE POSITION LIGHT.

SCOPE OF DELIVERY | LED high beam headlamp in the form of a compact lighting strip, single headlamp with 2,500 mm 3-pin connecting cable (with open ends), and includes set of universal brackets

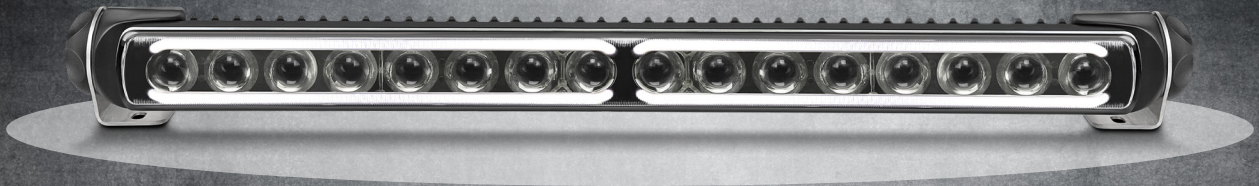
- Compact LED high beam headlamp
- For off-road use, submersible (fording ability up to a water depth of 1 m for up to 2 hours)
- Effective heat dissipation from the LED electronics thanks to the thermo-conductive plastic housing
- Multi-voltage: 9 – 33 volt
- Power consumption at 12 V:
Position light 6 W and high beam 36 W
- Power consumption at 24 V:
Position light 6 W and high beam 36 W
- ECE type-approved (ECE R149 high beam, ECE R148 position light, ECE R10 EMC)
- Weight 900 g



Upright / pendant mounting,
infinite angle adjustment

ECE Ref. 25

1FJ 958 140-001

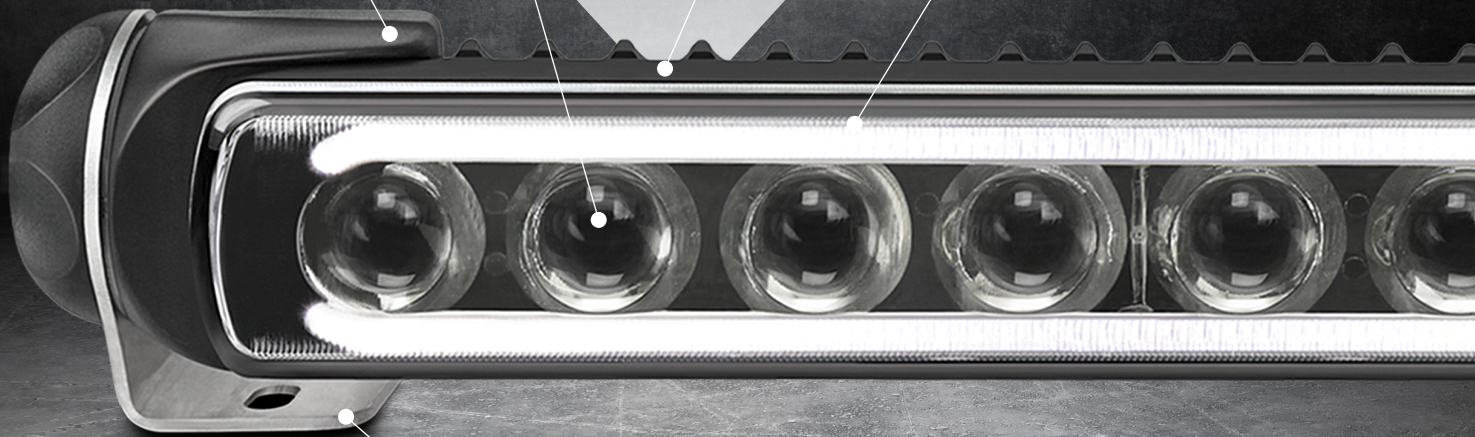


Strong, high-power LED

Compact and aerodynamic shape

Low profile and
low weight

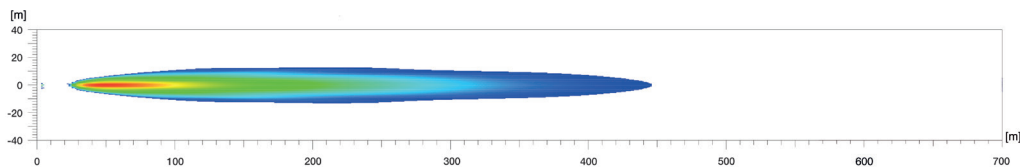
Striking position light with double signature
for an individual style



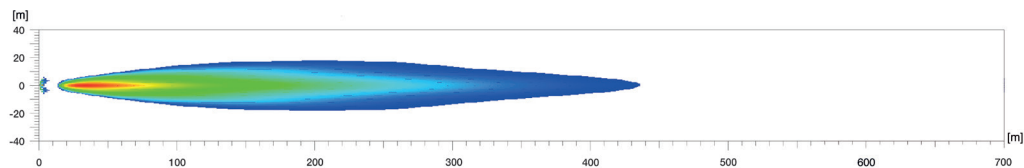
Universal bracket – continuously adjustable
for all mounting positions

LIGHT DISTRIBUTIONS

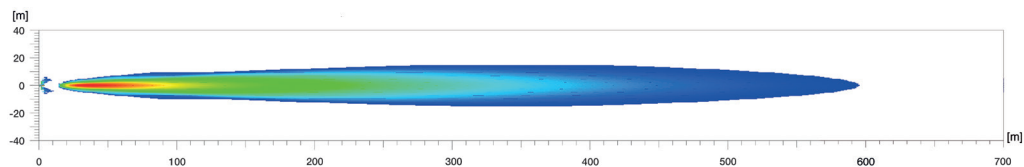
JUMBO LED | ECE Ref. 25



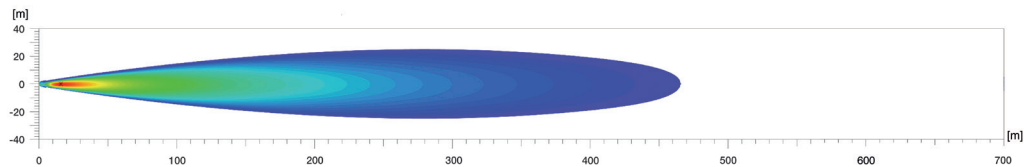
LUMINATOR LED | ECE Ref. 25



LUMINATOR LED | ECE Ref. 50



LED LIGHT BAR 470 PO | ECE Ref. 25





EDGE LIGHT TECHNOLOGY

BRINGING TOGETHER JUMBO LED AND
LUMINATOR LED
MODERN DESIGN WITH INNOVATIVE
EDGE LIGHT TECHNOLOGY

Not only does LED technology offer a significant increase in the potential for energy-saving but it also enables the creation of a distinctive light design for the auxiliary headlamp.

EdgeLight technology means a light-intense and very clear position light. With its light-emitting edge, the light guide of such EdgeLight technology creates a distinct light signature. This is brought about by the way in which light from an LED is coupled in at the rear edge of the EdgeLight. This light then runs through the light guide by means of total reflection up until it is emitted at the front edge.

HELLA Limited

Unit 6 Appletree Industrial Estate

Chipping Warden

Banbury, Oxon

OX17 1LL

England, UK

Tel.: (01295) 662400

Fax: 0800 7832571

E-mail: hella.sales@hella.com

Website: www.hella.co.uk

© HELLA GmbH & Co. KGaA, Lippstadt

922 999 142-363 J01689/KB/07.20/0.3

Subject to technical and price modifications.

Printed in Germany

THE RIGHT LIGHT FOR EVERY SITUATION.

Auxiliary headlamps from HELLA. Find out more now!

www.hella.com/lightstyle | www.hella.com/truck | www.hella.com/offroad | www.hella.com/eliver | www.hella.com/upc